

1) Read your stock file – With the car “Off” plug the tuner into your OBD2 diagnostic port (use the cable included). The OBD2 diagnostic port is located below the steering wheel.

With your foot off the brake, press and hold the start button for ~ 10 seconds until the dash lights up. This will place the car in diagnostics mode to prevent the power from turning off during programming. Do not start the car.

Press the “**Next**” button on your tuner until the display reads

“**Read 1  
E80**”

Press the “**Ok**” button to begin reading the file. The display will show a progress bar and will prompt you to turn the key to the “**Off**” position when it is finished. Press the “**Ok**” again and it will run a count-down timer to allow the computer in the car to reset before you start the engine.

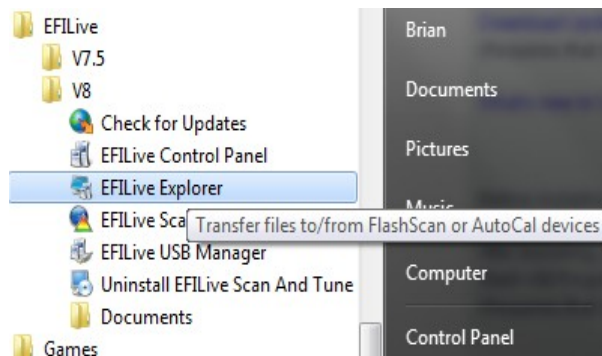
2) If you have an automatic transmission, repeat the same procedure but this time select “**Read 2  
T87**” to read the transmission calibration.

3) Unplug the tuner from the car and connect it to your computer using the USB cable.

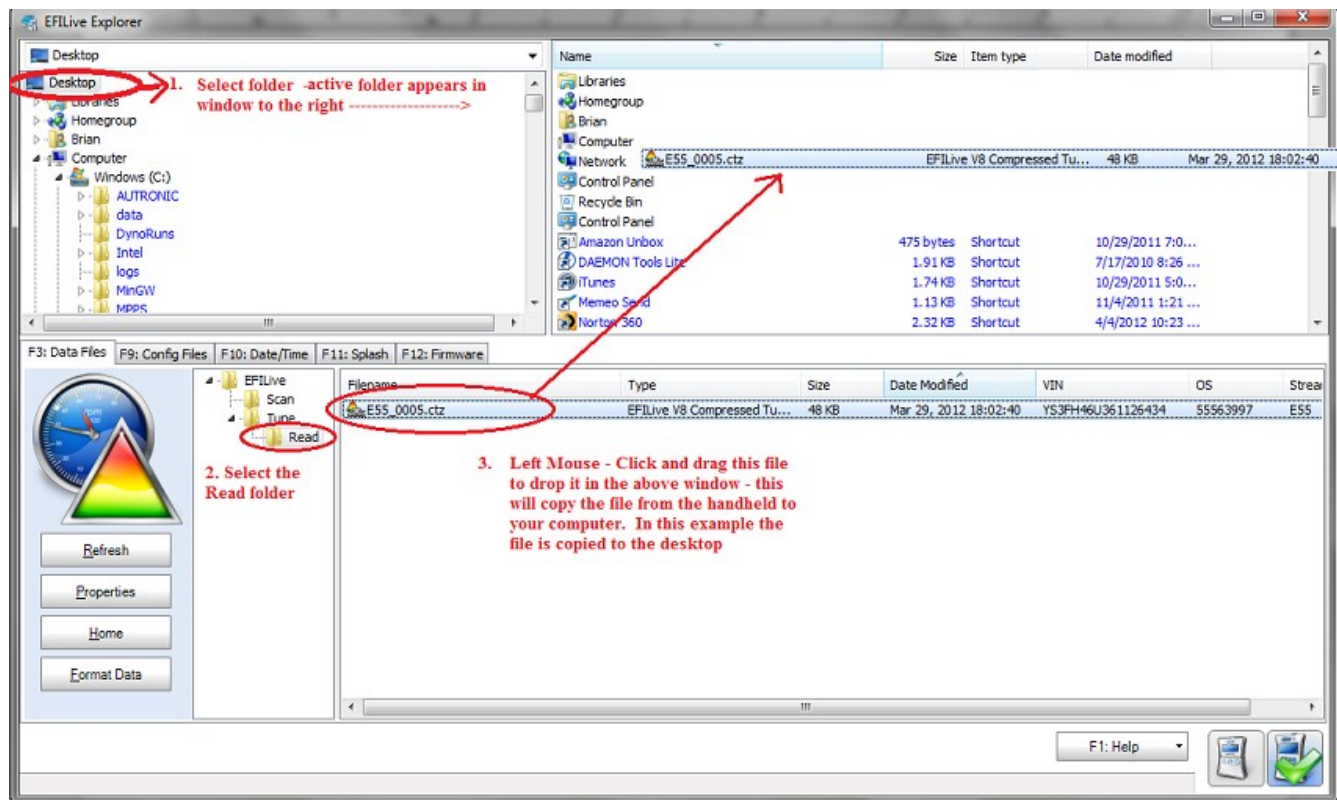
4) Download and Install EFILive V8 software:

<http://www.efilive.com/latest/cat/download-efilive>

Open EFILive V8 Explorer:

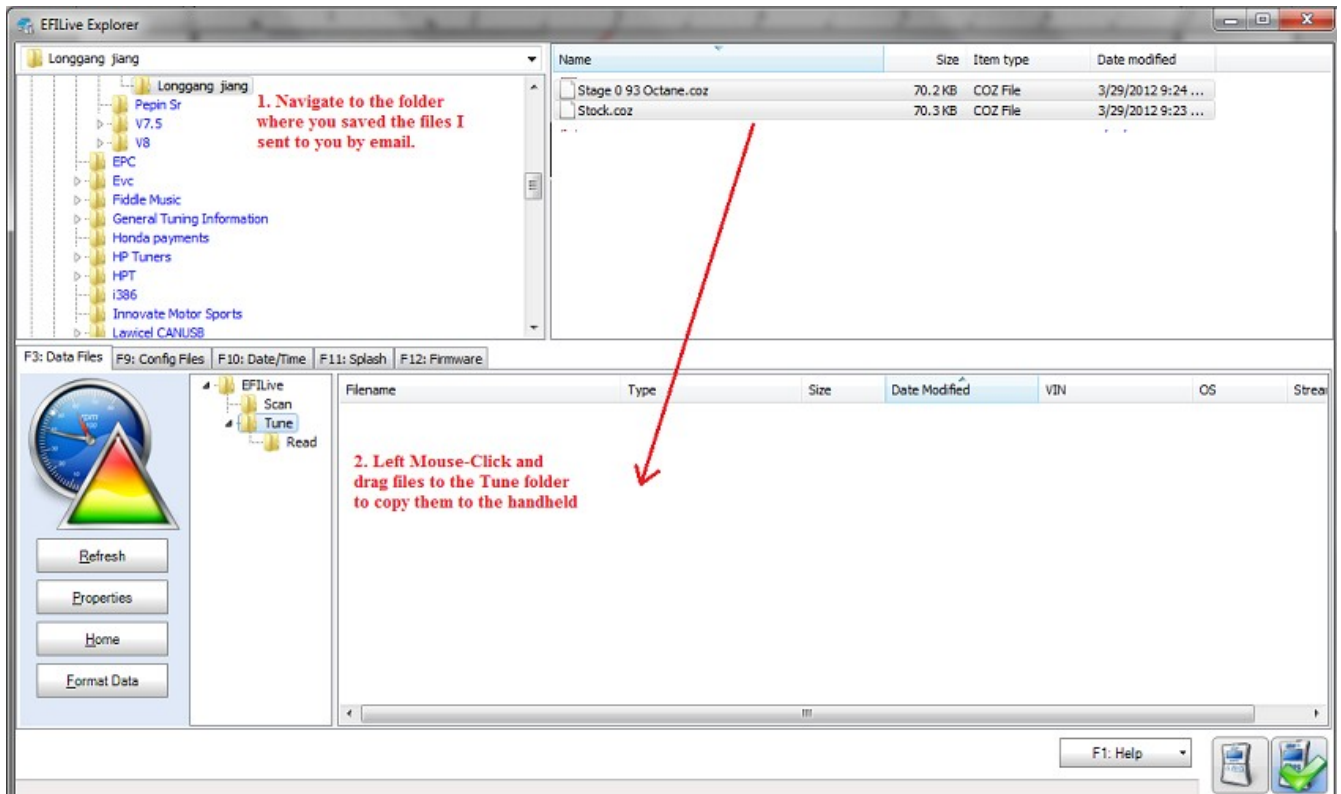


5) Copy files from the handheld to your computer and email the files:



Email the E80\_000X.ctz and T87\_000x.ctz files to [vermonttuner@yahoo.com](mailto:vermonttuner@yahoo.com).

6) I will email to you the new tune files within 24hrs. Once you receive the new files, open EFILive Explorer again and copy the new files to the Tune directory:



5) Unplug the handheld from your computer and go to your car.

To flash a new calibration file – With the car “Off” plug the tuner into your OBD2 diagnostic port. With your foot off the brake, press the “Start” button once to turn on the accessory power (**do not** start the car).

Press the “Next” button on your tuner until the display reads the calibration you would like to install:

Example:

**Prog 1**  
**S093OCT**

Press the “Ok” button to begin writing the file. The display will show a progress bar and will prompt you to turn the key to the “Off” position when it is finished (press the start button again with your foot off the brake). Press the “Ok” again and it will run a count-down timer to allow the computer in the car to reset before you start the engine. I

Thats it – just unplug the tuner and enjoy the new power! If you have an automatic transmission you can repeat the flash procedure to install your performance transmission calibration (ie, T87Sport file).

Cheers,  
Brian Blair  
Vermont Tuning LLC