



VERMONT TUNING LLC  
WWW.VERMONTTUNING.COM  
CUSTOM PERFORMANCE CALIBRATIONS

BRIAN BLAIR  
Ph: (802) 393-7305  
email: [brian@vermonttuning.com](mailto:brian@vermonttuning.com)  
124 LaHue Farm Road  
Sheldon, VT 05483

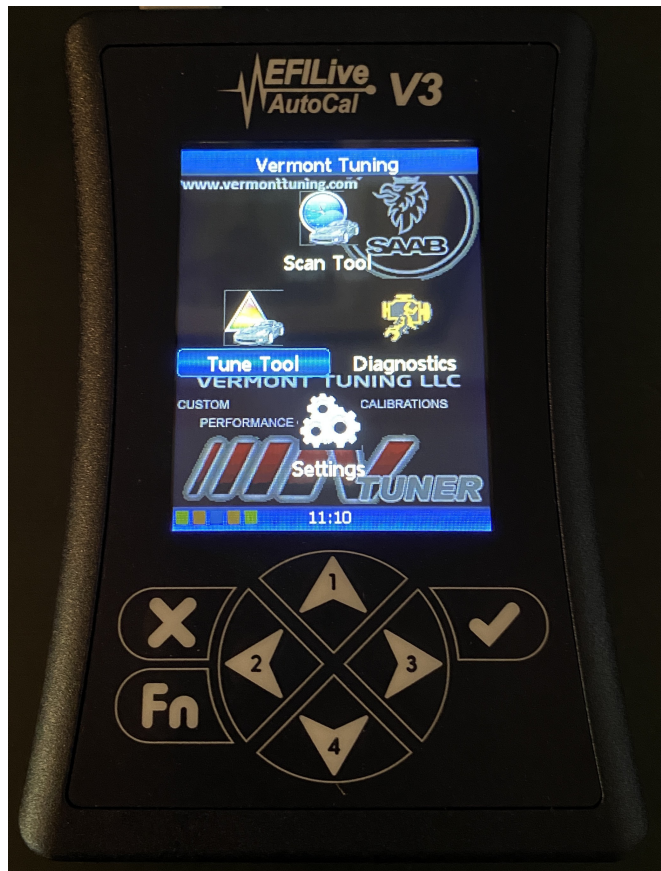
Read your stock file – With the car “Off” plug the tuner into your OBD2 diagnostic port (use the cable included). The OBD2 diagnostic port is located below the steering wheel.

**Important!:** It is recommended to have a 10A or higher charger on the battery during the read and flash process.

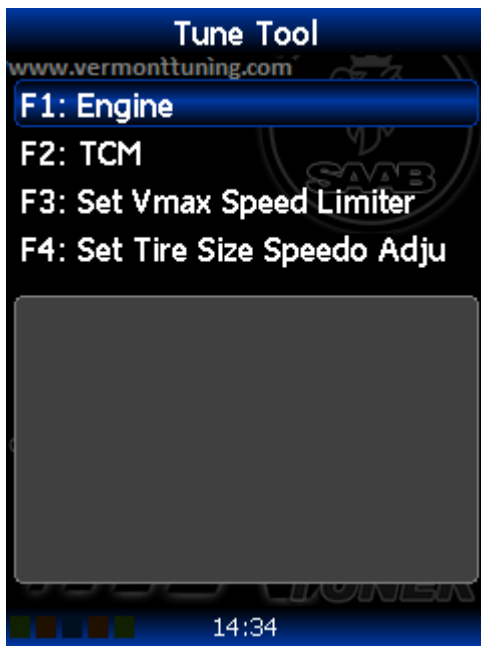
Turn the Key to the ON position (DO NOT start the engine!).

Press the ✓ button to accept the End User License Agreement.

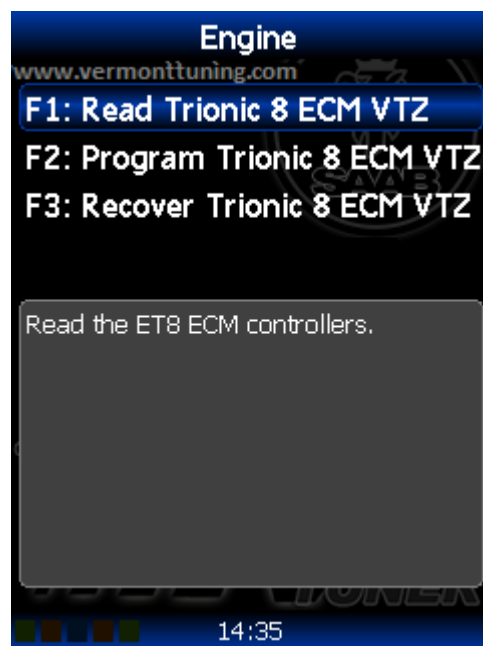
Select (2) Tune Tool button and press the ✓ button



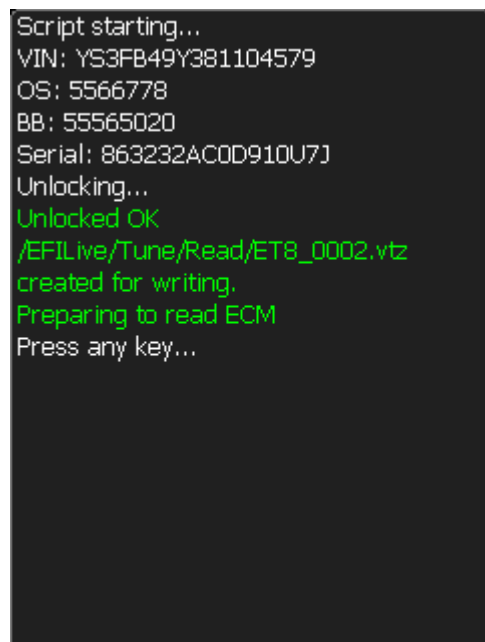
Select F1: Engine



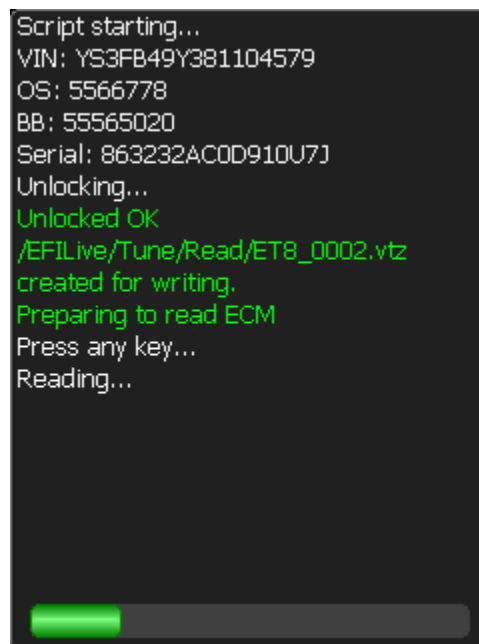
Select F1:Read Trionic 8 ECM VTZ



Press any key to start reading

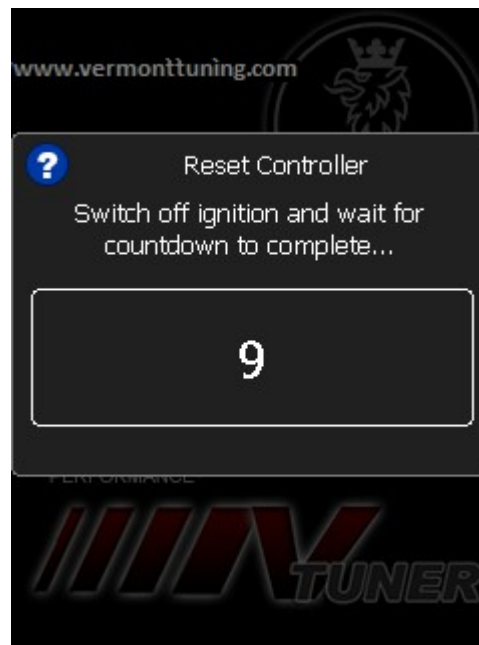


Wait for the read to complete (See progress bar)



The display will show a progress bar and will prompt you to turn the key to the “**Off**” position when it is finished (The T8 read procedure takes ~ 15 minutes to complete).

```
Script starting...
VIN: YS3FB49Y381104579
OS: 5566778
BB: 55565020
Serial: 863232AC0D910U7J
Unlocking...
Unlocked OK
/EFI/ Live/Tune/Read/ET8_0002.vtz
created for writing.
Preparing to read ECM
Press any key...
Reading...
Read completed successfully.
File saved as
/EFI/ Live/Tune/Read/ET8_0002.vtz
Turn ignition OFF Now
then press any key to continue..
```



After turning the key to OFF, press the “**Ok**” button and it will run a count-down timer to allow the computer in the car to reset before you start the engine. Remove the key from the ignition momentarily.

```
Script starting...
VIN: YS3FB49Y381104579
OS: 5566778
BB: 55565020
Serial: 863232AC0D910U7J
Unlocking...
Unlocked OK
/EFI/ Live/Tune/Read/ET8_0002.vtz
created for writing.
Preparing to read ECM
Press any key...
Reading...
Read completed successfully.
File saved as
/EFI/ Live/Tune/Read/ET8_0002.vtz
Turn ignition OFF Now
then press any key to continue..
Reading ECM
complete.
Press any key to return to menu.
```

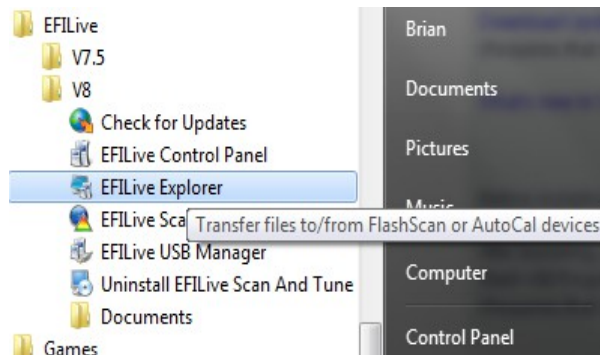
Press any key to return to the main menu. The read is now completed and you can transfer the file to your computer and email the file:

Unplug the tuner from the car and connect it to your computer using the USB cable.

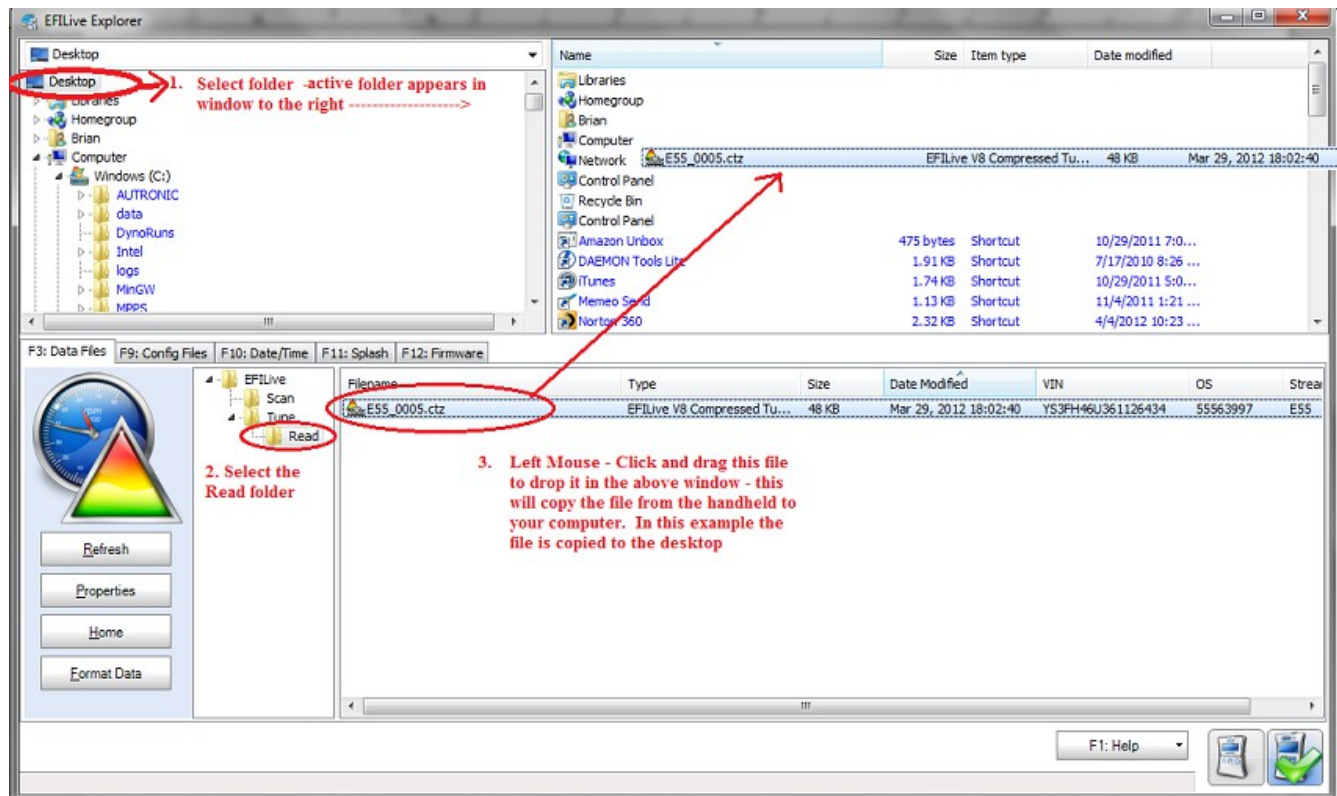
Download and Install EFILive V8 software:

<http://www.efilive.com/latest/cat/download-efilive>

Open EFILive V8 Explorer:

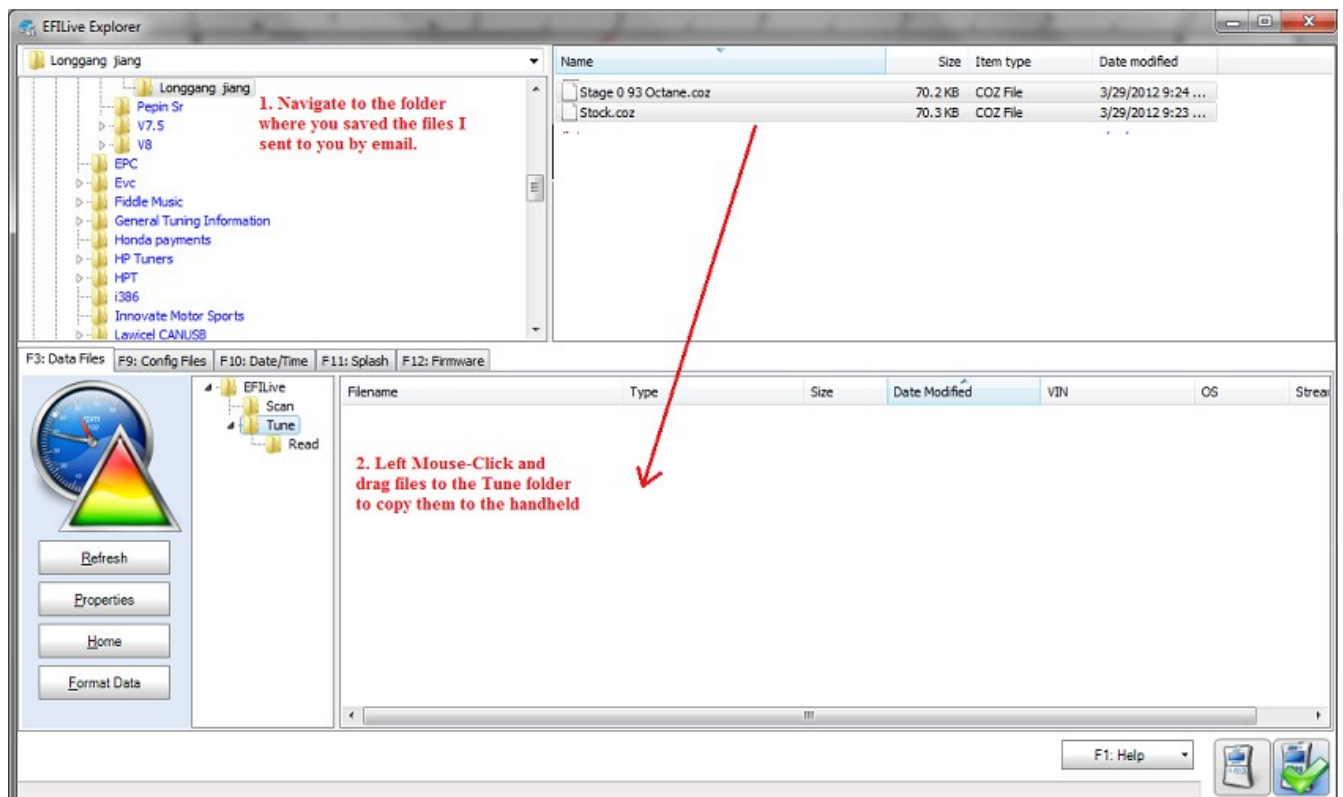


Copy files from the handheld to your computer and email the files:



Email the ET8\_000X.ctz file to [vermonttuner@yahoo.com](mailto:vermonttuner@yahoo.com).

I will email to you the new tune files within 24hrs. Once you receive the new files, open EFILive Explorer again and copy the new files to the Tune directory:



Unplug the handheld from your computer and go to your car.

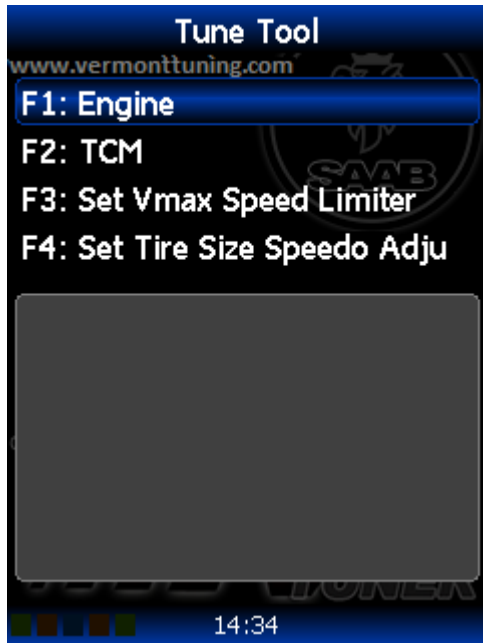
To flash a new calibration file – With the car “Off” plug the tuner into your OBD2 diagnostic port. Turn the key to the ON position (**DO NOT** start the car).

Press the ✓ button to accept the End User License Agreement.  
Select the (2) Tune Tool button and press the ✓ button





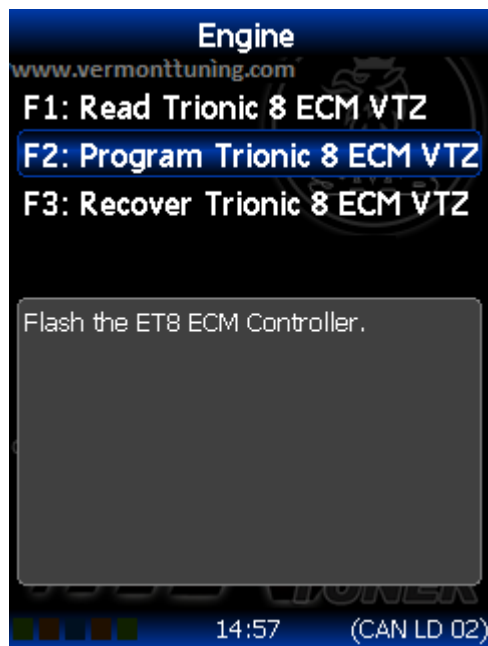
Select F1: Engine



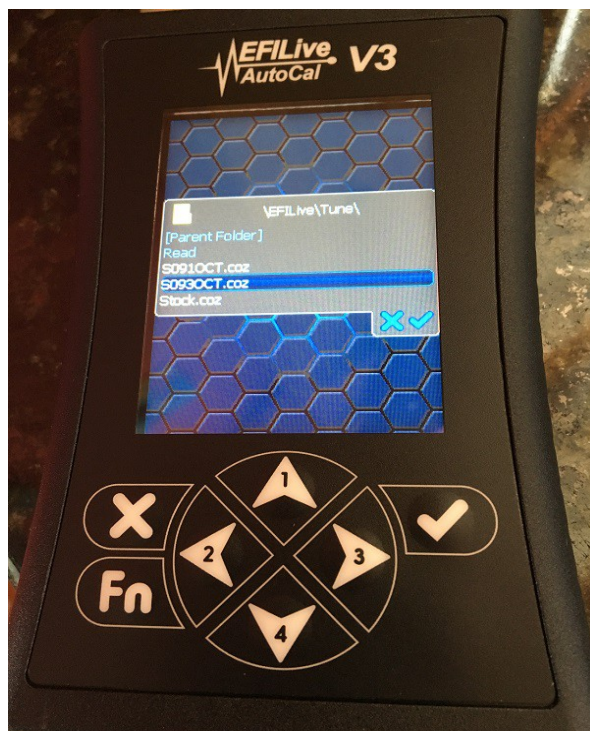
Select F2:Program Trionic 8 ECM VTZ



press the ✓ button to select the file to flash:



Your installed calibrations will be listed:Select the file you wish to install, turn the key on the car to the ON position but do not start the engine, then press the ✓button to begin the flash.



```
File \EFILive\Tune\Read\ET8_0002.VTZ
opened.
file bootblock = 55565020
ET8 Cal-Flash
VIN: YS3FB49Y381104579
OS: 5566778
BB: 55565020
Serial: 863232AC0D910U7J
BMPN: 55565020
VIN: YS3FB49Y381104579 is authorized
for flashing.
Press any key...
```

```
Serial: 863232AC0D910U7J
BMPN: 55565020
VIN: YS3FB49Y381104579 is authorized
for flashing.
Press any key...
Controller bootblock = 55565020
File bootblock = 55565020
File bootblock 55565020 is compatible
with controller's bootblock 55565020.
Unlocking...
Unlocked OK
VIN License SUCCEEDED.
Downloading boot loader
Downloading Bootloader
Starting boot loader...
Flashing...
OS: 5566778
Erasing Flash...
```

The flash progress will be shown at the bottom of the screen, The flash takes ~6 minutes to complete.

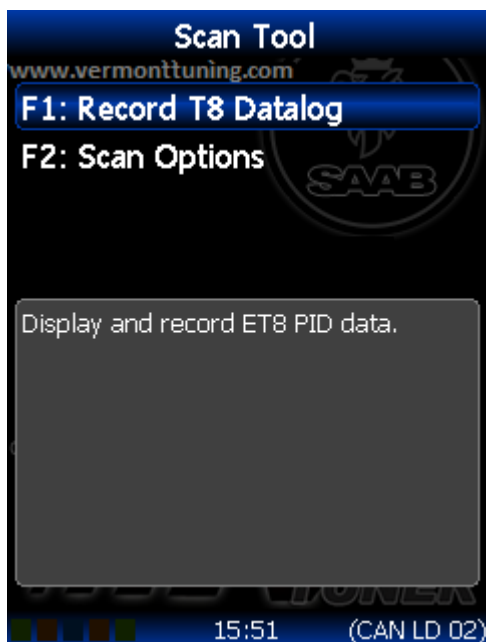
```
VIN: YS3FB49Y381104579 is authorized
for flashing.
Press any key...
Controller bootblock = 55565020
File bootblock = 55565020
File bootblock 55565020 is compatible
with controller's bootblock 55565020.
Unlocking...
Unlocked OK
VIN License SUCCEEDED.
Downloading boot loader
Downloading Bootloader
Starting boot loader...
Flashing...
OS: 5566778
Erasing Flash...
Flash Erase Complete
Flashing ECM...
[Progress Bar]
```

```
for flashing.
Press any key...
Controller bootblock = 55565020
File bootblock = 55565020
File bootblock 55565020 is compatible
with controller's bootblock 55565020.
Unlocking...
Unlocked OK
VIN License SUCCEEDED.
Downloading boot loader
Downloading Bootloader
Starting boot loader...
Flashing...
OS: 5566778
Erasing Flash...
Flash Erase Complete
Flashing ECM...
Flash completed successfully.
Turn OFF ignition now, then press any
key to continue.
```

Wait for the installation to complete – the handheld will prompt you to turn off the ignition when it is done. Press the “OK” key and it will count-down a timer to allow it time to reset the ECM. Remove the ignition key (important – the car will not start again until you remove the key momentarily) That is it, your car is now tuned! Just unplug the tuner and enjoy the new power!

### Data Logging:

You start a data log by navigating through the menu options Scan Tool --> Record T8 Datalog. Press the ✓ button to begin the data log.





```
/EFILive/Scan/ET8_002.pld
created for writing.
Ready to start data logging
Press any key...
```

**i** ET8 Data Logging

Time: 15:51:58  
Frame: 48

O2S11	0.445
O2S12	0.440
VSSe	0.0 km/hr
LOAD_PCT	0 %
SHRTFT1	0.0 %
LONGFT1	0.0 %
IAT	-40.0 °C
ECT	-40.0 °C
MIL_DIST	0 km
BARO	101.0 kpa
LOAD_ABS	0 %
EQ_RAT	0.000
MAPe	5.3 kpa

▲ ▼

Once the log begins it will display a timer indicating the elapsed time as well as real time data.

You should exit/save the log before you disconnect the handheld or the data may be lost. Just press the X button while the timer is running to exit/save the log.

```
/EFILive/Scan/ET8_001.pld
created for writing.
Ready to start data logging
Press any key...
/EFILive/Scan/ET8_001.pld
successfully saved to Scan folder
Press any key...
```

I like to see 5-10 minutes of mixed driving with some wide open throttle acceleration through the first couple of gears. To transfer the logs from the handheld to your computer, start the EFILive V8 Explorer application and click on the “Scan” folder. Your data logs will appear under this folder with file names like ET8\_0001.efi.

Cheers,

Brian Blair  
Vermont Tuning LLC